



St Barnabas Church of England VC Primary School

"Barnabas, the Encourager"



Our Vision Statement

'Our vision is to ignite curiosity and delight in learning so we are ready for an ever changing, challenging world.

We will build each other up to be unique individuals in a diverse community - showing resilience and working positively together to make every day count.'

Our core values of creativity, courage and compassion underpin our vision.

It is rooted theologically in '1 Thessalonians 5:11

'So speak encouraging words to one another. Build up hope so you'll all be together in this, no one left out, no one left behind.

The link with Saint Barnabas the Encourager is at the heart of our vision (Acts of the Apostles)

The Aims of Our School

(linked to the UN Convention on the Rights of the Child - CRC)

We aim to provide a curriculum that is broad, balanced, challenging and fun. We believe that a strong partnership between school, home, parish and community is essential to our children's development. Through this partnership we can help our children:

To develop academically, intellectually, physically, emotionally and socially.

To be prepared for future opportunities, responsibilities and experiences within and beyond our school.

To enjoy learning and to become independent, self-disciplined and self-motivated, and to achieve the highest standards of which they are capable. (CRC Article 6)

To develop and live by a personal set of well-founded moral values based upon Christian beliefs. (CRC Article 14)

To develop an awareness and appreciation of human achievements and aspirations, in our own and other societies. (CRC Article 28)

To gain understanding of and respect for people whose ways of life and points of view differ from their own. (CRC Article 29)

To develop lively, enquiring, imaginative and creative minds, with the confidence to question. (CRC Article 31)

More about our Values

As a Church of England school, Christian values influence the daily life of the whole school. Although we support children to develop an understanding of a range of values, we have chosen several values that we think are especially important for our school.

Compassion

Creativity

Courage

This is what these values mean to us:

Compassion	<p>We put ourselves 'in someone else's shoes' when they are sad or having a hard time.</p> <p>We try to understand how they might be feeling and do our best to try to help.</p> <p>We are kind and show people that we care about them.</p> <p><i>Christians believe that their attitudes and actions must reflect that kindness, mercy and compassion of Jesus and the love of God for everyone.</i></p> <p><i>'Clothe yourselves with compassion, kindness, humility, gentleness and patience'</i> Colossians 3.12</p>
Courage	<p>We have the courage to make the right choices, to speak out when something is wrong and to ask for help.</p> <p>We try something even though we might make mistakes.</p> <p>We persevere when things are difficult.</p> <p>We encourage others.</p> <p><i>Christians believe that God is present in every situation and that in times of difficulty they can pray to God for encouragement and strength. It is also important to offer help and encouragement to others facing difficulty.</i></p> <p><i>'Be strong and courageous; do not be frightened or dismayed, for the Lord your God is with you wherever you go.'</i> Joshua 1.9</p>
Creativity	<p>We explore, ask questions and are curious.</p> <p>We try to solve problems and think of different solutions.</p> <p>We have opportunities to develop and celebrate our different creative gifts and abilities.</p> <p>We value creation and take responsibility for looking after our planet.</p> <p><i>Christians believe that God is the 'Creator' and made human beings in his own image. They believe that that life is a 'gift'.</i></p> <p><i>So God created mankind in his own image, in the image of God he created them; male and female he created them.</i></p> <p>Genesis 1.27</p>

About the School

St. Barnabas is situated about one mile from the centre of York. The current St. Barnabas School building opened in November 2005. It replaced the old school building which had served the community for over 100 years.



The school comprises: a Foundation Stage Unit and 6 classrooms with direct access to outdoor space; a large hall/dining room with PE and sound and lighting equipment; cloakrooms; a central atrium which houses the library and workspaces; reception area and office; and a kitchen which provides daily lunches.

The grounds include a large playground, spacious field and additional grassed areas. We have developed this outside area to include some large play equipment, an allotment with raised beds, willow tunnel, sandpits, wildlife area, outdoor classroom and our spiritual garden - a quiet space with seating and planting. These provide ample space for safe play and learning outside the classroom.

School Office telephone number: 01904 936330

School Email Address: office@stb.pmat.academy

School Website: www.stbarnabasprimary.co.uk

Twitter: @stbarnabasyork

The School Team

The school team work together to provide the best for all the children in our care. It is made up of school staff – teaching and non-teaching, governors, parents and the children. Names of the staff and governors can be found on the school website. Staff photographs can also be found on the notice board in the front entrance.

School Governors

School governors are a team of people who work closely with the Headteacher to make key decisions vital to the successful running of the school. The governors appoint the Headteacher and make decisions that directly affect the education and well-being of the children. They play an important role in improving standards throughout the school and agree the school's budget.

The Governing Body at St Barnabas is made up of: three foundation (church) governors; three parent governors; one local authority governor; one staff governor; five co-opted governors and the Headteacher.

The Governing Body (GB) of the school meet formally once each half term. The minutes of the GB meetings (apart from those deemed to be confidential) are available, once approved, from the school website or on request from the school office. There are also various Governor Committees which report back to the GB.

Parent governors are elected by the parents in school. Any parent of a child currently in school is eligible to become a parent governor and represent the views of parents on the governing body. Being a school governor can be a really rewarding role and if you are interested in supporting the school in this way, please let us know.

Admissions Policy

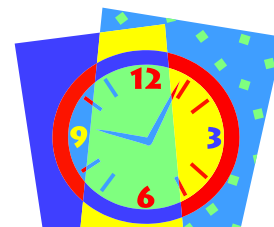
The school follows the City of York admissions policy which states that children are admitted to full time school in the September of the year in which they have their fifth birthday (1st September – 31st August). However, the law does not require parents to send their child to school until the term after the child is five years old. If you wish your child to have a part time place in school, please discuss this with the Headteacher as soon as possible.

School Times and Organisation

All children are taught in classes, small groups or individually according to their needs within the framework of the National Curriculum. Sometimes children are taught in mixed age classes.

The School Day

Doors open	8:35am
School starts/ Gates close	8.45am
Lunch	12 Noon to 1.00pm
School finishes	3.15pm



Children are expected to be in their classrooms ready to start the day by 8:45am.

Children have a 15 minute break in the morning session and the Key Stage 1 children have a 15 minute break in the afternoon. Reception aged children have outdoor activities built into their learning activities in line with the Foundation Stage Curriculum.

A member of staff is on duty on the main gate from 8:35am. School is not responsible for children who arrive at school before this time.

Car Park

In the interests of children's safety, the car park gates are closed to between 8:20-9am and 3:00 – 3:30pm. We encourage families to travel to and from school in a healthy and 'green' way e.g. walking, cycling and scooting. There are cycle and scooter stores on the playground and a further cycle store at the front of the school entrance. If you do have to travel by car, please bear in mind that Jubilee Terrace is a very small road with limited space for turning around and there are double yellow lines on the school driveway, hence parking and waiting here are prohibited.

Access to the car park at these times can be arranged for parents/carers with a blue badge. Please let us know if you need this.

Teaching Time

The teaching times in a normal week, excluding all breaks, registration, and assembly/collective worship are:

Key Stage 1:	23 hours 15 minutes per week
Key Stage 2:	25 hours per week

Attendance and Punctuality

We recognise that good attendance and punctuality is important for helping children to do as well as they possibly can do at school. If your child is unable to attend school we ask that you inform the school office of the reason for absence before 9am on the first day of absence.



If we do not receive a legitimate reason for absence (e.g. illness or unavoidable circumstances) this absence will be recorded as 'unauthorised'.

Children arriving after the gates have closed (8:45am) need to be signed in at the school office. Children will be marked as 'late' if they arrive between 8:45am-9:15am. Children arriving after 9:15am will be marked as absent for the morning session. This is recorded as an unauthorised absence unless there is a valid reason for the absence.

Leave of Absence / Holidays in Term Time

Parents do not have an automatic right for their children to have authorised absence to go on holiday. In line with guidance from the Department for Education we do not authorise any requests for leave of absence (including holidays) in term time unless in exceptional circumstances. The Headteacher has the discretion to authorise leave of absence but these cases are few. If you are considering leave of absence, please complete the request form available from the school office.

Parents can be issued with a Fixed Penalty Notice where they take a holiday in term time which is not authorised by the head teacher.

Please see our attendance policy for more information.

Collective Worship

Our school's daily pattern includes an act of Collective Worship, which is of a Christian character as we are a Church School. At St Barnabas we feel that this time spent together is an important and valuable part of school life where we strive to promote the sense of family atmosphere and the caring nature of the school. The children take part in a variety of experiences which help to develop the spiritual dimension of life and the awareness of the presence of a greater being, to develop a sense of awe and wonder and to try to understand others.

Our Collective Worship is planned to be inclusive – children are invited, not expected to join in prayers and Christian responses.

Parents have the right to request that their children be withdrawn from collective worship. In such circumstances, parents are asked to discuss this with the Headteacher.

Lunchtime Arrangements



School meals

School meals are prepared using fresh ingredients and cooked in the school kitchen. They are of excellent quality and many of our children currently have a school meal. Each day there is a choice of two main courses (one of which is a vegetarian option) or a sandwich option as well as a pudding or fruit for dessert. If children wish to have a sandwich for their lunch, they need to request this at the time the teacher takes the lunch register in the morning. The weekly menu is displayed via the noticeboard on the playground and on our website.

The cost of a school meal is free for children up to the end of Year 2 and £2.40 per day for Key Stage 2 children. We ask that meals are booked and payment is made electronically via Parent Pay (you will be given details once your child starts school). If you have any difficulties using this system, please speak to the school office. Lunches must be paid for before they are taken as we do not offer a credit system.

Please let us know in writing if your child has specific dietary requirements (e.g. vegetarian/cannot eat certain foods for religious reasons) or food allergies.

Pupils of parents who are in receipt of certain benefits may be eligible to free school meals as well benefitting from other subsidised and free school activities and uniform. Please see the 'Educational Benefits' section towards the end of this prospectus for further details and complete the Educational Benefits Form.



Packed lunches

We also make provision for children who wish to bring their own packed lunch.

We have a healthy eating policy and we encourage parents to send children with a balanced packed lunch (e.g. a sandwich, vegetable sticks, fruit, yoghurt). We ask that sweets, chocolate bars and fizzy drinks are not brought into school and other sweet items in packed lunches (e.g. biscuits/cakes) are kept to a minimum. Please send drinks in plastic, rather than glass bottles and ensure that lunch boxes are named and taken home at the end of each day.

Behaviour and Safety

Our approach to behaviour and safety is based on the right of all children to be able to learn, be safe and enjoy coming to school.

Our rules are few so that they can be easily remembered and understood by everyone. These rules are referred to frequently in dialogue about behaviour, so helping children to understand what these rules look like 'in action' and why they are important.

Our rules are: **Ready Respectful Safe**

We aim to develop self-discipline based on mutual respect and care for one another. We teach the children that they are responsible for their actions and the choices that they make and help them to understand how their actions affect others.

We actively look out for positive behaviours and recognise this in a range of ways such as verbal praise, names displayed, certificates, messages sent home.

Should individual children persistently misbehave, or commit a serious misdemeanour, parents will be informed and invited to share in formulating a solution. We try to avoid excluding children from school but this sanction may be used for serious incidents or repeatedly breaking the school rules.

Please see the Behaviour Policy on our website for further information.

Bullying

We do not tolerate bullying of any kind. We define bullying as '*deliberately hurtful behaviour, repeated over a period of time*' (e.g. not a one off 'falling out'). We teach the children about the different kinds of bullying, how it makes people feel and how to tell someone if they are being bullied.

Parents are encouraged to speak to the Headteacher if they think their child is being bullied.

Home-School Agreement

The school has a Home-School Agreement which has been discussed with staff, children, parents and governors and which staff, children and parents sign. New parents will be given copies of the agreement and asked to sign and return a copy. This will be sent home every year in September as a reminder of our expectation.

Safeguarding

St Barnabas CE Primary School fully recognises its responsibilities for safeguarding and providing a safe environment where children can learn free from harm. Full details of our safeguarding procedures can be found in our safeguarding policies, available on request and on the school website. We practice safe recruitment in checking the suitability of staff and volunteers to work with children. All Governors, staff and pupils play their part in the implementation of our safeguarding policies.

Items needed for school

School uniform

High standards in uniform are indicative of the high standards that we promote at our school. Our uniform is a sign of belonging to the St Barnabas school community with our shared aims, values and rules. We hope that children will wear their uniform with pride.

At St Barnabas CE Primary School, in conjunction with Pathfinder Multi-Academy Trust, we aim to provide the most cost-effective uniform for our families. We have made a commitment to:

- keep branded items optional
- ensure all required uniform items are widely available
- provide good condition second hand uniform to help cater for all family budgets
- avoid frequent changes
- engage with parents and carers when making changes to our uniform

The school uniform consists of:

- Navy blue sweatshirt or cardigan (either plain or embroidered with the school logo)
- White or pale blue polo shirt (with or without logo)
- Plain grey, black, or navy blue school-type trousers or shorts (leggings or jeans are not acceptable)
- Plain grey, black or navy blue skirt or pinafore
- Plain tights in school colours
- Blue/white check summer dress
- Black shoes. Trainer style shoes are acceptable as long as they are plain black without logos.



PE Kit

- plain white round-necked t-shirt
- blue or black shorts or jogging bottoms
- trainers
- School jumper for outdoor PE lessons.

All children are expected to get changed into their PE kits in school before a PE lesson and changed back into their uniform after the lesson. The exception to this is when children attend a sport club after school. In this case children will go home in their PE kits.

The following items are not school uniform and should not be worn for school:

- Items in other colours
- Items with other logos
- Leggings
- Chino/jean style trousers
- Hooded tops
- Novelty hairbands
- Large brightly coloured bows

If children wear boots to walk to school they should change into their black school shoes on arrival at school.

Suppliers

Our non-branded school uniform items are available in all supermarkets at a low cost.

Branded items with the logo, including book bags and PE bags can be purchased via the following suppliers:

Get Branded shop on Clifton Moor or via their website

<https://www.getbrandedworkwear.co.uk/collections/st-barnabas-ce>

My Clothing website

<https://myclothing.com/collections/saint-barnabas-church-of-england-voluntary-controlled-primary-sc-7891>

All items of clothing should be clearly labelled with the child's name.

Jewellery/Make up

Children may wear small stud earrings that must be taken out for PE – either before the children come to school that day or by the children themselves. Adults in school cannot take out earrings. Other jewellery should not be worn.

If you are considering having your child's ears pierced, please have it done at the very beginning of the summer holidays so they do not miss out on PE and swimming which are legal requirements of the National Curriculum.

Children are permitted to wear watches of an appropriate size for school. Smart watches are not permitted.

We do not feel it appropriate for children to wear any form of make-up or nail varnish.

Other equipment

- Navy blue book bag (this should be brought to school / taken home each day)
- Water bottles are provided and kept in school for Reception children. Children in other year groups should provide their own standard non-branded water bottle. It should be taken home each day and returned filled with water.

We provide all the other stationery and equipment that children need for school so there is no need for children to bring their own unless they have been specifically asked or invited to do this by their teacher for a special activity.

We encourage children to be independent at school and take responsibility for their own belongings. Please help them to develop these skills by supporting them to organise their own belongings at the beginning and end of the school day.

Personal Items

We ask that children do not bring in toys, balls or other objects to school as they may get lost, stolen or damaged.

If there is a reason that your child needs to bring any such item into school, please discuss this with the Headteacher.

Mobile Phones

Children are not permitted to use mobile phones on the school premises.

We understand that parents of children in older years who travel to / from school by themselves may want their child to have a phone with them on their journey. In these cases, children must hand their phone into their teacher or the school office as soon as they come into school and collect them at the end of the day. We will keep the phones secure although we are not liable for them.

Medicines in School

We ask parents to provide full details, in writing, of any health problems that your child may have and to keep the school informed of any changes. It is essential that we have up to date telephone numbers where we can contact you in case of emergency.



Some children need to keep an inhaler in school to use if necessary. In these cases, please complete the medical needs form available from the office. Inhalers must be brought into school in their original box showing your child's name. Parents are responsible for updating inhalers when they expire.

No medicines other than inhalers should be brought into school without prior agreement of the Headteacher.

We will not routinely administer medicines that have been prescribed for a common illness such as infections as usually there is sufficient time outside of the school day for children to have the correct number of doses. If your child needs to have a dose during the school day, please speak to Mrs Cook in the school office. Parents will need to complete a request form.

We will only administer other medicines to children at school if this medication is essential to them being able to attend school and if it has been prescribed for them. In these cases, please make an appointment to see the Headteacher in order to prepare a Medical Needs Plan for your child.

All medication that is brought into school **MUST** show your child's name and the prescribed dose.

Our Curriculum

The school curriculum comprises all learning and other experiences that each school plans for its pupils. The curriculum provided by the school is planned to meet the statutory requirements of the National Curriculum (Sept 2014) and the Locally Agreed Syllabus for RE.

The Education System organises children in Key Stages (KS).

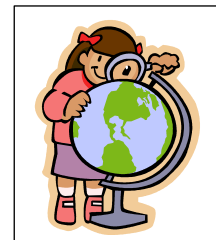
Early Years Foundation Stage (EYFS) – 3-5 years

Key Stage 1 – 5-7 years

Key Stage 2 – 7-11 years

Key Stage 3 – 11-14 years

Key Stage 4 – 14-16 years



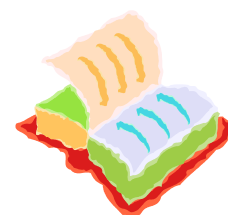
In each Key Stage, children are organised into year groups. The first year of school is called 'Reception' but children are also in their final year of the Foundation Stage. The children in EYFS/Reception do not follow the National Curriculum, but follow the EYFS Framework.

Key Stage	Year group	Year in which children are:
Foundation Stage	Reception	5 years old
Key Stage 1	Year 1	6 years old
	Year 2	7 years old
Key Stage 2	Year 3	8 years old
	Year 4	9 years old
	Year 5	10 years old
	Year 6	11 years old

National Curriculum Subjects

The National Curriculum for Key Stage 1 and Key Stage 2 contains the following elements:

- English
- Mathematics
- Science
- Computing
- Art and Design
- Design and Information Technology (D & T)
- Geography
- Music
- History
- Physical Education (PE)
- Languages (KS2 only)



Schools are also required to teach

- Religious Education (RE)
- Personal, Social and Health Education (PSHE)

The Governors have the responsibility of ensuring that the requirements of the curriculum are being met.

Children undergo Teacher Assessment throughout the year and SAT Assessments at the end of Key Stage 1 and Key Stage 2.

Further information about our curriculum and the National Curriculum can be found in the 'Our Curriculum' Section of our website.

Curriculum intent



Our teaching styles and techniques are based on the belief that children learn best when they are enjoying their learning, know what they have done well and what their next steps are.

Children develop at very different rates, and so the work we do is adapted to suit the individual within the resources we have, in an effort to help every child make as much progress as they possibly

As well as striving towards academic progress, we work to develop imagination, curiosity, personal responsibility, self-discipline and a positive attitude towards learning – skills that will help children to be lifelong learners.

We ask parents to help us in supporting their children to do their best. Further information about how these subjects are taught at St Barnabas can be found on our website on the relevant subject area pages.

Early Years Foundation Stage

Our Reception class follow the EYFS curriculum, which has seven main areas of learning.

The Prime Areas:

- Personal, Social and Emotional Development
- Communication and Language
- Physical Development

The Specific Areas:

- Literacy
- Mathematics
- Understanding the World
- Expressive Arts

We implement these areas of learning by providing a safe, stimulating environment that allows children to discover, be challenged, consolidate and achieve their very best whilst developing their resilience and independence.

Children learn these skills and knowledge through a combination of:

- Teacher taught whole class or small group lessons
- Adult led activities
- Playing and learning in the areas of provision indoors or outdoors.

Throughout all of these areas of learning and at the heart of the EYFS Curriculum are the "Characteristics of Effective Learning". Children are supported to develop the three characteristics of "Playing and Learning", "Active Learning" and "Thinking Critically" throughout all their activities.

We get to our children well and use their interests to inspire their learning.

Our learning environments, both inside and outside are adapted to meet the different and developing needs of our children

Early Learning Goals:

In the final term of the year, a profile will be completed for your child. This provides parents and carers and teachers with a well-rounded picture of a child's knowledge, understanding and abilities, their attainment against expected levels, and their readiness for year 1. Throughout their year in Reception, the children will be observed and assessed, mainly through their play, in order to gain insights and make reasonable judgements against the early learning goals. We will use the terms 'emerging' or 'expected' to describe our judgements, under the new guidance the term 'exceeding' has been removed.

Years 1-6

English

We attach great importance to the basic skills of English (listening, speaking, reading and writing) because fluency in these skills is an essential foundation for success in all subjects. English is taught as a subject in its own right and children have the opportunity to practise and apply these skills through the whole curriculum. Children in Reception and Key Stage 1 have a daily phonics lesson which focuses on learning the 'sounds' that make up words in order to read and spell. The Little Wandle Letter and Sounds Scheme is used as the basis for teaching phonics

Reading: We provide a range of books to stimulate interest and enjoyment in reading. Children progress through books in our reading scheme under the guidance of their teacher and are also able to borrow books from our library. We encourage regular home reading, with teachers and parents working together to support the individual child. From the beginning, we set out to develop the attitude that books are to be enjoyed, used and treasured.

Writing: Children are taught to communicate their ideas in writing for different purposes (stories, explanations, instructions, descriptions and giving information) using correct grammar and accurate spelling and punctuation. The skill of handwriting is taught explicitly and we expect work in all its forms to be presented neatly and thoughtfully.

Speaking and listening: We teach children to speak clearly and convey ideas confidently using Standard English. Children learn to give reasons for their ideas, listen to and respond to other people, ask questions, describe, explain and to communicate to different audiences. Well-developed spoken language skills support children to communicate well in writing.

Mathematics

Maths is taught as a subject in its own right and mathematical skills applied and developed across other areas of the curriculum. The maths curriculum is organised into the following areas:

NUMBER: counting, ordering, place value, calculation, fractions (including decimals and percentages);

MEASUREMENT: units of measurement, area, perimeter, volume;

GEOMETRY: properties of shape; position and direction;

STATISTICS: graphs, charts, tables;

Older children also study ratio and proportion and algebra.

We place a strong emphasis on number and calculations, including counting, as these provide the foundations for success in maths. We encourage children to learn the basic number facts (Learn its) and each year group has a set of facts that children are expected to know by the end of the year.

Children are taught to apply their maths to solve problems, including breaking down problems into small steps and persevering in finding solutions.

Practical work is used to support learning, for children of all ages. Children are also given many opportunities to understand how maths relates to everyday life.

The Maths No-Problem Scheme is used as the basis for teaching maths

Science

Through the science curriculum children develop their knowledge and understanding of: living things (animals, plants, humans); materials and their properties; electricity; light and forces. Children also learn skills needed to work scientifically (asking and answering questions, observing, carrying out tests, collecting and analysing data).

Most scientific knowledge and understanding is developed through practical work and investigation.

Religious Education

R.E. is taught both as a separate subject and linked to other areas of the curriculum.

The R.E. Curriculum seeks to provide pupils with opportunities for learning about and from religions. Although Christianity forms the basis of the curriculum it also includes teaching about the major faiths of the world, so that we may help our children become aware not only of themselves and their own culture, but to recognise and treat with respect the distinctive features and beliefs of other groups and communities, for example places of worship, festivals and customs.

The school incorporates the Locally Agreed Syllabus into its teaching of RE.

PE and Sports, including swimming

All children from Y1-Y6 have two PE lessons per week. Specialist teachers in PE and Dance supports PE throughout the school and deliver some after school clubs.

All children have the opportunity to have swimming lessons for at least one term per year in Years 3 and 4 at Bootham School's pool. Top up lessons are provided in Years 5 and 6 to ensure children can swim at least one length unaided before the end of Year 6.

Relationships, sex and health education (RSHE)

We follow the statutory RSHE curriculum.

Through this curriculum children learn about the key building blocks of healthy, respectful relationships, focusing on family and friendships, in all contexts, including online. This sits alongside the essential understanding of how to be healthy.

In relationships education children learn about healthy relationships, including how to communicate their own boundaries and recognise the boundaries of others, staying safe online, and the differences between appropriate and inappropriate or unsafe contact. We provide this in the context of different family models.

In health education, children learn about the characteristics of good physical health and mental wellbeing. At an appropriate age children learn about puberty, including menstruation.

In Year 6 children are taught about human reproduction. Although this is part of the science curriculum, this is taught in the context of healthy relationships and changes during puberty.

Parents are informed about when these sessions are taking place so that they can be prepared for any questions that children ask at home.

Other curriculum subjects

Parents are informed of the topics and specific areas that children will be learning through a termly class learning overview.

Wider Curriculum

School Council

We aim for all children to contribute to the decision-making process in the school. There is a School Council made up of elected representatives from each year group. These children help to make decisions about specific areas of school life.

Instrumental Lessons

We aim to give every child the opportunity to learn to play an instrument during their time at St Barnabas in the hope that this will inspire them to continue to play a musical instrument in the future. Currently, school funds weekly whole class instrumental lessons for a lower Key Stage 2 class for two terms of the year.

Parents also have the opportunity to pay for their child to have music lessons during the school day delivered by other local peripatetic teachers. These can be provided free for children in receipt of benefits related free school meals. School can provide further information about this.

Educational Visits

Visits provide valuable first hand experiences which benefit the children in their learning. As we are located so close to the city centre, classes generally visit a city centre museum or the local area several times each year. You will be informed of these visits in advance. Please be assured that at all times the children will be well supervised and that the school follows regulations laid down for school visits.

Residential visits are usually undertaken in Years 5/6. These visits help us to provide areas of study difficult to cater for in school and also have considerable social benefits

Homework

We hope that parents will work in partnership with the school to support their child's learning. The aim of homework is to reinforce what children are currently learning at school, particularly reading, spelling and key number facts and as the children get older to enable them to develop independent learning skills e.g. through researching a particular topic at home.

We expect children of all ages to read at home daily, learn weekly spellings and practice relevant number facts for their age (e.g. addition and subtraction facts, doubles, times tables). Many of these practice activities can be done when you have a few spare minutes e.g. walking to school or in the car.

We expect children to spend approximately 20 minutes per day on these activities in Key Stage 1 and 30 minutes per day in Key Stage 2. Key Stage 2 children are also expected to complete at least one other written piece of homework each week. Further details are provided to parents about homework in each year group as children move into their new classes in September.

We subscribe to several online learning platforms that children can access at home as well as at school via a school or individual password. Sometimes teachers set activities on these websites for homework but we hope that children can enjoy accessing them at any time. Further details about access for these will be given to you when your child starts school. Please let us know if your child does not have access to a computer/tablet or internet at home so that we can try to provide a little more access at school for him/her.

Extra Curricular Activities (Clubs)

These after school activities, delivered by the school staff or by a private provider, are a valuable extension of the curriculum. Children are encouraged to take part in these extra opportunities for learning and have the opportunity to attend many and varied clubs over the year. These activities may include sports, choir, dance, music, homework, art and computing. Children also sometimes have the chance to play in sports tournaments against other local school after school.

We try to ensure that as many children as possible can access these activities and many clubs are free of charge. We do sometimes ask for a small charge for after school clubs.

Special Educational Needs

The term Special Educational Needs (SEN) has a legal definition which is set out in the Education Act 1996 and the Children and families Act 2014. It applies to children who have learning difficulties or disabilities that make it significantly harder for them to learn or access education than most other children of their age.

Some children find it harder to learn than other children of the same age. We support these children by making small changes to teaching methods and resources in order to help children to learn and boost their progress.

Children and young people who have SEN tend to have more significant barriers to their learning. They do not necessarily have a disability and many disabled children and young people do not have special educational needs.

When a child has SEN, we put specific support in place, working closely with parents and if necessary, drawing on the expertise of other agencies such as the speech and language service, educational psychologist or behaviour support service.

The school has a qualified SENCO (Special Educational Needs Coordinator) and governor with designated interest in SEN. Further details about our SEN offer can be found on our school website (About Us – Policies – SEN Information Report).

Educational Benefits

Pupils of parents who are in receipt of certain benefits may be eligible to certain educational benefits. These are triggered by your child's entitlement to 'Free School Meals'. Every pupil eligible for 'Free School Meals' also triggers essential funding for the school called 'Pupil Premium Funding'.

Some of the benefits are offered by the council (free lunches, cycle training, free or reduced cost music lessons) but some are offered by the individual school, as determined by each school's governing body. At St Barnabas, the governing body have decided to offer free or subsidised clubs and residential visits.

Although children in Years Reception to end of Year 2 are automatically entitled to free school lunches, your child will still benefit from other free or subsidised school activities if eligible for this funding. We therefore ask all parents of new starters to complete the Educational Benefits Form and return it to school.

Partnerships

Church School Links



The local clergy and members of the parish visit school on a regular basis and are actively involved in our work. The children visit the church as both part of their RE curriculum and to attend services. Parents are invited to join us for church services

Home-School Communication

As a small school, we make great efforts to get to know parents and involve them with the life of the school.

We would much prefer you to come to school and talk about your concerns, than let a difficulty worsen. We would also like some feedback on things you have enjoyed!

All parents are invited to parents' evenings in the autumn and spring term to discuss the progress being made by their child. There is also a full written report sent home at the end of the summer term.

There are frequent opportunities for parents to find out more about school life and what/how your child is learning. We hold half termly 'Stay and Learn' sessions where you can spend 20-30 minutes in your child's class lesson. These are usually held at the beginning or end of the school day.

We also use:

1. **Parent Pay** which is our main communication system and is used for emails from school, bookings and payments for school meals, clubs and trips. You will be given details about setting up an account when your child starts school.

2. **Class Dojo** is also used as an important mean of communication between parents and class teachers. Teachers regularly post photos and class news. Parents can also message the class teacher directly. Messages are usually checked once each day after school by the teachers.

3. Newsletter

Our weekly newsletter shares school and class news and gives important information about upcoming events. This is sent out on a Friday by email and class dojo, it is then also uploaded to our website under parents-letters.

Leeman Road Playgroup

This pre-school provision is run independently but shares our Foundation Stage Unit. The Playgroup takes children from 2 and a half years old and accept the 30 / 15 hours funding.

The staff from the Playgroup and school work closely together to ensure a smooth transition into school.

Attending the Playgroup does not mean that your child is guaranteed a place at St Barnabas School. Applications for a school place must be made to the Local Authority between December and February of the year in which your child will start school.

Please contact the Leeman Road Playgroup directly (leemanroad.playgroup@hotmail.co.uk) to enquire about places.

St. Barnabas Out of School Club

This club is run by the school offers before and after school care for children at St. Barnabas School. The club takes place in the dining area at the back of the hall. Breakfast Club runs every morning from 7:30am and After School Club runs from 3.00 - 6.00pm.

Breakfast Club £4.75

After School Club £7.50

After School Club Early Bird Session 3-5pm £5.00

Bookings and payment needs to be made via Parent Pay. If you need to set up a parent pay account, please contact the school office for your activation letter,

Transfer to Secondary Education

In your child's final year at St. Barnabas, information is provided by the local secondary schools to help you to make a decision on which one to choose.

There are several secondary schools close by to choose from. Millthorpe Secondary School is the secondary school for children who live in our catchment area. However, parents are free to choose any secondary school in York.

We strongly advise that you visit the schools and read their admissions policies before making a decision and that both you and your child are involved in making the choice, following your visits.

Regulatory Documents

There is a large selection of regulatory documents and policies in school, many of which are also on our school website in the 'About Us' section.

If you are unable to find the information that you need from the website, please ask at the school office.

Policy for charges and remissions for school activities

The School's Policy is based on the Local Authority's guidelines and is available in school on the website (About Us – Policies). The Governors may make a charge to parents for certain out of school and other optional activities taken up by their child (usually residential activities).

For most visits and activities, parents are asked for a voluntary contribution towards the cost of the activity.

No eligible child can be excluded for non-payment of voluntary contributions; however, if such contributions are not forthcoming, a visit may not be able to go ahead. Some valuable activities, such as swimming and visits, can only take place given sufficient contributions.

We ask that all contributions and payments are made electronically via Parent Pay. You will be given details of this when your child starts school.

Concerns and Complaints

If you have a concern, we ask that you speak to us about it as soon as possible. We hope that most concerns can be resolved quickly without the need for further action. In the event of a complaint arising about the school, the complainant should, first of all, approach the Headteacher. If the Headteacher is unable to resolve the matter satisfactorily, it should be referred to the Governing Body. A copy of the Complaints Procedure is available on our website and on request from the office.

Finally..

The staff and governors are committed to the education and well-being of your child. We hope that you will be an active partner in helping your child to achieve their full potential and enjoy sharing in their learning and growing.

We hope that you have found all the information that you need in this prospectus. If you would like further information or to visit the school, please get in touch.