



# St Barnabas Church of England VC Primary School

*“Barnabas, the Encourager”*





## **Our Mission Statement**

*At St Barnabas, all children are valued as individuals made in the image of God. We educate and develop the whole child in order to be the best that they can be. We promote a spirit of belonging and encourage children to be aware of the needs, feelings and rights of others, and so make a positive contribution to society.*

*Christian values are central to the ethos of our school, especially those of: community, friendship, forgiveness, truth, courage and thankfulness.*

## **The Aims of Our School**

(linked to the UN Convention on the Rights of the Child - CRC)

We aim to provide a curriculum that is broad, balanced, challenging and fun. We believe that a strong partnership between school, home, parish and community is essential to our children's development.

Through this partnership we can help our children:

- To develop academically, intellectually, physically, emotionally and socially.
- To be prepared for future opportunities, responsibilities and experiences within and beyond our school.
- To enjoy learning and to become independent, self-disciplined and self-motivated, and to achieve the highest standards of which they are capable. (CRC Article 6)
- To develop and live by a personal set of well-founded moral values based upon Christian beliefs. (CRC Article 14)
- To develop an awareness and appreciation of human achievements and aspirations, in our own and other societies. (CRC Article 28)
- To gain understanding of and respect for people whose ways of life and points of view differ from their own. (CRC Article 29)
- To develop lively, enquiring, imaginative and creative minds, with the confidence to question. (CRC Article 31)
- To be adaptable learners in a rapidly changing, challenging world. (CRC Article 31)

## More about our Values

As a Church of England school, Christian values influence the daily life of the whole school. Although we support children to develop an understanding of a range of values, we have chosen several values that we think are important for our school. These are:

friendship

community

forgiveness

courage

truth

thankfulness

This is what these values mean to us:

- Friendship** Tolerance, acceptance, kindness, respect, love, compassion.  
Showing 'friendship' to others in our school, local, and global community.  
*God as our friend. Our attitudes should reflect the kindness and mercy of Jesus and God's love of everyone.*
- Thankfulness** Appreciating others. Being thankful for the gifts of life. Appreciating and caring for creation. Being grateful for what we have (not being greedy!).  
*Thanks and praise to God for the gift of life, for creation and for loving and caring for us.*
- Courage** Having the courage to make the right choice. Speaking out and asking for help. Working hard. Trying something even though you might make mistakes. Persevering. Encouraging others.  
*God is present in every situation. This helps us when we face danger, opposition and fear.*
- Forgiveness** Moving on when we have done wrong and not bearing a grudge. Understanding that sanctions and forgiveness can come together.  
*God is 'Slow to anger, abounding in love and forgiving sin'.*
- Truth** Understanding right from wrong. Making informed moral choices. Having integrity.  
*Jesus' teachings help us to see the nature of God and the way in which He means us to live.*
- Community** Making a contribution to and caring for local and global communities. Understanding of own part in the community to make it work. Supporting each other.  
*We are all part of God's family. We share our joys and suffering and support each other.*

*The italics indicate the Christian perspective on these values.*

## **About the School**

St. Barnabas is situated about one mile from the centre of York. The current St. Barnabas School building opened in November 2005. It replaced the old school building which had served the community for over 100 years.



The school has been recently extended and now comprises: a Foundation Stage Unit and 6 classrooms with direct access to outdoor space; a large hall/dining room with PE and sound and lighting equipment; cloakrooms; a central atrium which houses the library and workspaces; reception area and office; and a kitchen which provides daily lunches.

The grounds include a large playground, spacious field and additional grassed areas. We have developed this outside area to include some large play equipment, an allotment with raised beds, willow tunnel, sandpits, wildlife area and our spiritual garden - a quiet space with seating and planting. These provide ample space for safe play and learning outside the classroom.

We are proud of the awards that we have received in recognition of our hard work and commitment to children's learning and development. These include the Artsmark Gold, Healthy Schools' Award, Fairtrade in Yorkshire Schools' Award and Food for Life Partnership Bronze Award.

## **The School Team**

The school team work together to provide the best for all the children in our care. It is made up of school staff – teaching and non-teaching, governors, parents and the children. Names of the staff and governors can be found in the appendices. Staff photographs can also be found on the notice board in the front entrance and on the school website.

## **School Governors**

School governors are a team of people who work closely with the Headteacher to make key decisions vital to the successful running of the school. The governors appoint the Headteacher and make decisions that directly affect the education and well-being of the children. They play an important role in improving standards throughout the school and agree the school's budget.

The Governing Body at St Barnabas is made up of: three foundation (church) governors; three parent governors; one local authority governor; one staff governor; five co-opted governors and the Headteacher.

The Governing Body (GB) of the school meet formally once each half term. The minutes of the GB meetings (apart from those deemed to be confidential) are available, once approved, from the school website or on request from the school office. There are also various Governor Committees which report back to the GB.

Parent governors are elected by the parents in school. Any parent of a child currently in school is eligible to become a parent governor and represent the views of parents on the governing body. Being a school governor can be a really rewarding role and if you are interested in supporting the school in this way, please let us know.

## **Admissions Policy**

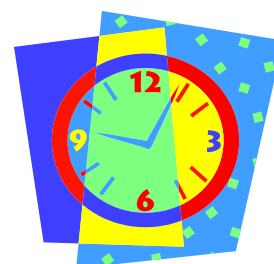
The school follows the City of York admissions policy which states that children are admitted to full time school in the September of the year in which they have their fifth birthday (1<sup>st</sup> September – 31<sup>st</sup> August). However, the law does not require parents to send their child to school until the term after the child is five years old. If you wish your child to have a part time place in school, please discuss this with the Headteacher as soon as possible.

## **School Times and Organisation**

All children are taught in classes, small groups or individually according to their needs within the framework of the National Curriculum. As we are a small school, children are often taught in mixed age classes. Within each class, work is planned for whole class, or group, and matched to the individual as far as possible.

### **The School Day**

Playground gates open	8:35am
Cloakroom doors open	8:40am
<b>School starts</b>	<b>8.45am</b>
Cloakroom doors close	8:50am
Lunch	12 Noon to 1.00pm
<b>School finishes</b>	<b>3.00pm</b>



Children have a 15 minute break in the morning session and the Key Stage 1 children have a 15 minute break in the afternoon. Reception aged children have outdoor activities built into their learning activities in line with the Foundation Stage Curriculum.

A member of staff is on duty on the playground from 8:35am. School is not responsible for children who arrive at school before this time.

### **Car Park**

In the interests of children's safety, the car park gates are closed to between 8:20-9am and 2:40 – 3:15pm. We encourage families to travel to and from school in a 'healthy' way e.g. walking, cycling and scooting. There are cycle and scooter stores on the playground and a further cycle store at the front of the school entrance. If you do have to travel by car, please bear in mind that Jubilee Terrace is a very small road with limited space for turning around and there are double yellow lines on the school driveway, hence parking and waiting here are prohibited.

Access to the car park at these times can be arranged for parents/carers with a blue badge. Please let us know if you need this.

### **Teaching Time**

The teaching times in a normal week, excluding all breaks, registration, assembly/collective worship are:

<b>Key Stage 1:</b>	22 hours per week
<b>Key Stage 2:</b>	23 hours 45 minutes per week

## Collective Worship

Our school's daily pattern includes an act of Collective Worship, which is of a Christian character as we are a Church School. At St Barnabas we feel that this time spent together is an important and valuable part of school life where we strive to promote the sense of family atmosphere and the caring nature of the school. The children take part in a variety of experiences which help to develop the spiritual dimension of life and the awareness of the presence of a greater being, to develop a sense of awe and wonder and to try to understand others.

Parents have the right to request that their children be withdrawn from collective worship. In such circumstances, parents are asked to discuss this with the Headteacher.

## Lunchtime Arrangements



### **School meals**

School meals are prepared using fresh ingredients and cooked in the school kitchen. They are of excellent quality and many of our children currently have a school meal. Each day there is a choice of two main courses (one of which is a vegetarian option) or a sandwich option as well as a pudding or fruit for dessert. If children wish to have a sandwich for their lunch, they need to request this at the time the teacher takes the lunch register in the morning. The weekly menu is displayed via the noticeboard on the playground and on our website.

The cost of a school meal is free for children up to the end of Year 2 and £2.25 per day for Key Stage 2 children. We ask that payment is made electronically via Parent Pay (you will be given details once your child starts school). If you are unable to pay using this system, please speak to the school office who will let you know how to make your payment. Lunches must be paid for before they are taken as we do not offer a credit system.

**Pupils of parents who are in receipt of certain benefits may be eligible to free school meals as well benefitting from other subsidised and free school activities and uniform. Please see the 'Educational Benefits' section towards the end of this prospectus for further details and complete the Educational Benefits Form.**



### **Packed lunches**

We also make provision for children who wish to bring their own packed lunch. We have a healthy eating policy and we encourage parents to send children with a balanced packed lunch (e.g. a sandwich, vegetable sticks, fruit, yoghurt). We ask that sweets, chocolate bars and fizzy drinks are not brought into school and other sweet items in packed lunches (e.g. biscuits/cakes) are kept to a minimum. Please send drinks in plastic, rather than glass bottles and ensure that lunch boxes are named and taken home at the end of each day.

## **Attendance and Punctuality**

We recognise that good attendance and punctuality is important for helping children to do as well as they possibly can do at school. If your child is unable to attend school we ask that you inform the school office of the reason for absence before 9am on the first day of absence.



If we do not receive a legitimate reason for absence (e.g. illness or unavoidable circumstances) this absence will be recorded as 'unauthorised'.

Children arriving after the cloakroom doors have closed (8:50am) need to be signed in at the school office. Children will be marked as 'late' if they arrive between 8:50am-9am. Children arriving after 9am will be marked as absent for the morning session.

## **Leave of Absence / Holidays in Term Time**

Parents do not have an automatic right for their children to have authorised absence to go on holiday. In line with guidance from the Department for Education we do not authorise any requests for leave of absence (including holidays) in term time unless in exceptional circumstances. The Headteacher has the discretion to authorise leave of absence but these cases are few. If you are considering leave of absence, please complete the request form available from the school office.

In certain circumstances parents can be issued with a Fixed Penalty Notice where they take a holiday in term time which is not authorised by the head teacher.

Our full attendance policy is available on request.

## **Behaviour and Safety**

Our approach to behaviour and safety is based on the right of all children to be able to learn, be safe and enjoy coming to school. We expect children to have positive attitudes to learning and behaviour and to follow the school rules below:

*At St Barnabas CE School we:*

- *are kind, helpful and polite*
- *follow instructions*
- *do not hurt anybody*
- *move in and around school safely and quietly*
- *look after the school and equipment*

We aim to develop self-discipline based on mutual respect and care for one another. We teach the children that they are responsible for their actions and the choices that they make and help them to understand how their actions affect others.

Rewards and sanctions are very clearly laid out. Rewards include praise, stickers, team 'crystals' and a hierarchy of sanctions is in place in each class, called the 'Tracking Chart'. This includes sanctions such as 'time out' and missing playtimes.

Should individual children persistently misbehave, or commit a serious misdemeanour, parents will be informed and invited to share in formulating a solution. We try to avoid excluding children from school but this sanction may be used for serious incidents or repeatedly breaking the school rules.

Please see our Behaviour Policy on our website for further information.



## **Bullying**

We do not tolerate bullying of any kind. We define bullying as deliberately hurtful behaviour, repeated over a period of time (e.g. not a one off 'falling out'). We teach the children about the different kinds of bullying, how it makes people feel and how to tell someone if they are being bullied.

Parents are encouraged to speak to the Headteacher if they think their child is being bullied.

## **Home-School Agreement**

The school has a Home-School Agreement which has been discussed with staff, children, parents and governors and which staff, children and parents sign. New parents will be given copies of the agreement and asked to sign and return a copy.

## **Safeguarding**

St Barnabas CE Primary School fully recognises its responsibilities for safeguarding and providing a safe environment where children can learn free from harm. Full details of our safeguarding procedures can be found in our safeguarding policies, available on request and on the school website. We practice safe recruitment in checking the suitability of staff and volunteers to work with children and follow the City of York Council Safety Management System to ensure the health and safety of all users of the school building.

All Governors, staff and pupils play their part in the implementation of our safeguarding policies.

## **Items needed for school**

### **School uniform**

All children in school are expected to wear school uniform and we hope to have the parents' co-operation in this.

The following list serves as a guide to parents:

- Navy blue sweatshirt or cardigan (either plain or embroidered with the school logo)
- White or pale blue polo shirt (with or without logo)
- Plain grey, black, navy blue school-type trousers, shorts, skirt or pinafore (not including leggings, jeans, chinos)
- Plain tights in school colours
- Blue/white check summer dress

### **Footwear**

Children are asked to wear black shoes. For safety reasons shoes should be flat and fit securely.

**All items of clothing should be clearly labelled with the child's name.**



## **PE Kit**

All children should have a PE kit in school at all times consisting of:

- plain white t-shirt, blue or black shorts and plimsolls for indoor PE
- jogging bottoms, sweatshirt and trainers for outdoor PE.

We ask children to keep their kit in a school PE bag in the cloakroom.

School uniform items, including items embroidered with the school logo are available via the Tesco school uniform website: [www.clothingattesco.com/icat/embschoolwear/](http://www.clothingattesco.com/icat/embschoolwear/). There is a direct link to this website in the parents' section of the school website.

## **Jewellery/Make up**

Children should not wear jewellery to school. If your child has pierced ears they may wear small studs, which they must be able to remove themselves for PE and swimming. If your child is unable to remove their own earrings please ensure that they are not worn at all on PE days as they are a potential danger. Children will not be permitted to take part in PE lessons if they are wearing jewellery that they cannot remove themselves.

If you are considering having your child's ears pierced, please have it done at the very beginning of the summer holidays so they do not miss out on PE and swimming which are legal requirements of the National Curriculum.

Children are permitted to wear watches of an appropriate size for school.

We do not feel it appropriate for children to wear any form of make-up, e.g. nail varnish.

## **Personal Items**

We ask that children do not bring toys, valuable objects (including mobile phones and electronic devices) to school as they may get lost, stolen or damaged.

If there is a reason that your child needs to bring any such item into school, please discuss this with the Headteacher.

## **Other equipment**

Children will need a navy blue book bag and PE bag for school. PE bags and book bags with the school logo are available from the Tesco uniform website.

Children who have attended the Leeman Road Playgroup are given a book bag as a leaving gift.

Book bags containing your child's reading book should be brought to school every day. We provide all the equipment that children need for school so there is no need for children to bring their own unless they have been specifically asked or invited to do this by their teacher for a special activity.

We ask that children do not bring toys, games or mobile phones or valuable objects to school in order to avoid the risk of them getting lost or broken.

We encourage children to be independent at school and take responsibility for their own belongings. Please help them to develop these skills by supporting them to organise their own belongings at the beginning and end of the school day.

## **Medicines in School**

We ask parents to provide full details, in writing, of any health problems that your child may have and to keep the school informed of any changes. It is essential that we have up to date telephone numbers where we can contact you in case of emergency.



Some children need to keep an inhaler in school to use if necessary. In these cases, please complete the medical needs form available from the office. Inhalers must be brought into school in their original box showing your child's name. Parents are responsible for updating inhalers when they expire.

**No medicines other than inhalers should be brought into school without prior agreement of the Headteacher.**

We will not routinely administer medicines that have been prescribed for a common illness such as infections as usually there is sufficient time outside of the school day for children to have the correct number of doses.

We will only administer medicines to children at school if this medication is essential to them being able to attend school and if it has been prescribed for them. In these cases, please make an appointment to see the Headteacher in order to prepare a Medical Needs Plan for your child. Please note that school staff are not required to administer medicines and will only do so if this has been agreed on the Medical Needs Plan.

## **Our Curriculum**

The school curriculum comprises all learning and other experiences that each school plans for its pupils. The curriculum provided by the school is planned to meet the statutory requirements of the National Curriculum (Sept 2014) and the Locally Agreed Syllabus for RE.

The Education System organises children in Key Stages (KS).

Early Years Foundation Stage (EYFS) – 3-5 years

Key Stage 1 – 5-7 years

Key Stage 2 – 7-11 years

Key Stage 3 – 11-14 years

Key Stage 4 – 14-16 years



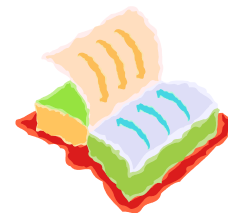
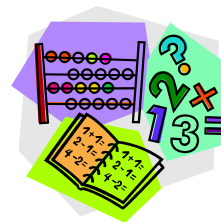
In each Key Stage, children are organised into year groups. The first year of school is called 'Reception' but children are also in their final year of the Foundation Stage. The children in EYFS/Reception do not follow the National Curriculum, but follow the EYFS Framework.

<b>Key Stage</b>	<b>Year group</b>	<b>Year in which children are:</b>
Foundation Stage	Reception	5 years old
Key Stage 1	Year 1	6 years old
	Year 2	7 years old
Key Stage 2	Year 3	8 years old
	Year 4	9 years old
	Year 5	10 years old
	Year 6	11 years old

## **National Curriculum Subjects**

The National Curriculum for Key Stage 1 and Key Stage 2 contains the following elements:

- English
- Mathematics
- Science
- Computing
- Art and Design
- Design and Information Technology (D & T)
- Geography
- Music
- History
- Physical Education (PE)
- Languages (KS2 only)



Schools are also required to teach

- Religious Education (RE)
- Personal, Social and Health Education (PSHE)

The Governors have the responsibility of ensuring that the requirements of the curriculum are being met.

Children undergo Teacher Assessment throughout the year and SAT Assessments at the end of Key Stage 1 and Key Stage 2.

Further information about our curriculum and the National Curriculum can be found in the 'Our Curriculum' Section of our website.

## **Curriculum Organisation**

### **Curriculum aims**



Our teaching styles and techniques are based on the belief that children learn best when they are enjoying their learning, know what they have done well and what their next steps are. Children develop at very different rates, and so the work we do is adapted to suit the individual within the resources we have, in an effort to help every child make as much progress as they possibly can.

As well as striving towards academic progress, we work to develop imagination, curiosity, personal responsibility, self-discipline and a positive attitude towards learning – skills that will help children to be lifelong learners.

We ask parents to help us in supporting their children to do their best.

### **Foundation Stage**

Reception children in the Foundation Stage develop their skills in the areas of Communication and Language; Physical Development; Personal, Social and Emotional Development; Literacy; Mathematics; Understanding of the World and Expressive Arts & Design. These skills are realised through play and practical activity both inside and outside the classroom.

## **English**

We attach great importance to the basic skills of English (listening, speaking, reading and writing) because fluency in these skills is an essential foundation for success in all subjects. English is taught as a subject in its own right and children have the opportunity to practise and apply these skills through the whole curriculum. Children in Reception and Key Stage 1 have a daily phonics lesson which focuses on learning the 'sounds' that make up words in order to read and spell.

**Reading:** We provide a range of books to stimulate interest and enjoyment in reading. Children progress through books in our reading scheme under the guidance of their teacher and are also able to borrow books from our library. We encourage regular home reading, with teachers and parents working together to support the individual child. From the beginning, we set out to develop the attitude that books are to be enjoyed, used and treasured.

**Writing:** Children are taught to communicate their ideas in writing for different purposes (stories, explanations, instructions, descriptions and giving information) using correct grammar and accurate spelling and punctuation. The skill of handwriting is taught explicitly and we expect work in all its forms to be presented neatly and thoughtfully.

**Speaking and listening:** We teach children to speak clearly and convey ideas confidently using Standard English. Children learn to give reasons for their ideas, listen to and respond to other people, ask questions, describe, explain and to communicate to different audiences. Well-developed spoken language skills support children to communicate well in writing.

## **Mathematics**

Maths is taught as a subject in its own right and mathematical skills applied and developed across other areas of the curriculum. The maths curriculum is organised into the following areas:

NUMBER: counting, ordering, place value, calculation, fractions (including decimals and percentages);

MEASUREMENT: units of measurement, area, perimeter, volume;

GEOMETRY: properties of shape; position and direction;

STATISTICS: graphs, charts, tables;

Older children also study ratio and proportion and algebra.

We place a strong emphasis on number and calculations, including counting, as these provide the foundations for success in maths. We encourage children to learn the basic number facts (Learn its) and each year group has a set of facts that children are expected to know by the end of the year.

Children are taught to apply their maths to solve problems, including breaking down problems into small steps and persevering in finding solutions.

Practical work is used to support learning, particularly for younger children. Children are also given many opportunities to understand how maths relates to everyday life.

## **Computing**

We have a set of laptops and Learn Pad tablets which children use regularly. Children learn specific computer science skills such as writing simple computer programs. They also have opportunities to use information and communication technology such as video, photos, animation and word processing to support their learning across the curriculum.



## **Science**

Through the science curriculum children develop their knowledge and understanding of: living things (animals, plants, humans); materials and their properties; electricity; light and forces. Children also learn skills needed to work scientifically (asking and answering questions, observing, carrying out tests, collecting and analysing data). Most scientific knowledge and understanding is developed through practical work and investigation.

## **Religious Education**

R.E. is taught both as a separate subject and linked to other areas of the curriculum. The R.E. Curriculum seeks to provide pupils with opportunities for learning about and from religions. Although Christianity forms the basis of the curriculum it also includes teaching about the major faiths of the world, so that we may help our children become aware not only of themselves and their own culture, but to recognise and treat with respect the distinctive features and beliefs of other groups and communities, for example places of worship, festivals and customs.

The school incorporates the Locally Agreed Syllabus into its teaching of RE.

## **PE and Sports, including swimming**

All children from Y1-Y6 have two PE lessons per week. One of these regular lessons is delivered by a sports coach employed by the school via 'Total Sports'. Children also have the opportunity to work with other specialist coaches (e.g. in football, cricket, gym) during curriculum time throughout the year.

As many of our children live close to the river, we place a special emphasis on swimming. Children from Year 2 – Year 5 go swimming for one term each year. School funds the cost of the swimming lessons but parental contributions are requested to help fund the cost of the coach.

## **Other curriculum areas**

Most of the curriculum is taught through cross-curricular topic based programmes: e.g. a topic on Buildings may involve aspects of Mathematics, Design Technology, Science, Art and may also provide links with other subjects. Within these topics, emphasis is placed on developing skills which are transferable to other areas of learning and across the curriculum.

Parents are informed of the topics and specific areas that children will be learning through a termly class newsletter.

At the end of each topic, parents (or another family member) are invited to attend the 'Exit Task' which is an opportunity for the children to present and celebrate what they have learned through their topic.

## **Other aspects of the curriculum**

### **Sex and Relationships Education**

Throughout school, children are taught how to have good relationships based on respect and care for themselves and others. Through the science curriculum, children learn about lifecycles and that animals have offspring.

In Year 6, usually in the summer term, children are taught about changes in adolescence for both boys and girls. Year 5 girls are also given some information about menstruation. This specific work with the older children is delivered by the school nurse with support from the class teacher.

Parents are informed about when this session will take place so that they can be prepared for any questions that children ask following the session.

### **School Council**

We aim for all children to contribute to the decision-making process in the school. There is a School Council made up of elected representatives from each year group. These children help to make decisions about specific areas of school life.

### **Instrumental Lessons**

We aim to give every child the opportunity to learn to play an instrument during their time at St Barnabas in the hope that this will inspire them to continue to play a musical instrument in the future. Currently, school funds weekly whole class ukulele lessons for a lower Key Stage 2 class. These are currently delivered by a peripatetic music teacher through a subsidised scheme called 'Wider Opportunities'.

Parents also have the opportunity to pay for their child to have music lessons during the school day delivered by other local peripatetic teachers. School can provide further information about this.

### **Educational Visits**

Visits provide valuable first hand experiences which benefit the children in their learning. As we are located so close to the city centre, classes generally visit a city centre museum or the local area several times each year. You will be informed of these visits in advance. Please be assured that at all times the children will be well supervised and that the school follows regulations laid down for school visits.

Residential activities are usually undertaken in Years 5/6. These visits help us to provide areas of study difficult to cater for in school and also have considerable social benefits

### **Policy for charges and remissions for school activities**

The School's Policy is based on the Local Authority's guidelines and is available in school on the website (About Us – Policies). The Governors may make a charge to parents for certain out of school and other optional activities taken up by their child (usually residential activities).

For most visits and activities, parents are asked for a voluntary contribution towards the cost of the activity.

No eligible child can be excluded for non-payment of voluntary contributions; however, if such contributions are not forthcoming, a visit may not be able to go ahead. Some valuable activities, such as swimming and visits, can only take place given sufficient contributions.

## **Homework**

We hope that parents will work in partnership with the school to support their child's learning. The aim of homework is to reinforce what children are currently learning at school, particularly reading, spelling and key number facts and as the children get older to enable them to develop independent learning skills e.g. through researching a particular topic at home.

We expect children of all ages to read at home daily, learn weekly spellings and practice relevant number facts for their age (e.g. addition and subtraction facts, doubles, times tables). Many of these practice activities can be done when you have a few spare minutes e.g. walking to school or in the car.

We expect children to spend approximately 20 minutes per day on these activities in Key Stage 1 and 30 minutes per day in Key Stage 2. Key Stage 2 children are also expected to complete at least one other written piece of homework each week. Further details are provided to parents about homework in each year group as children move into their new classes in September.

We subscribe to several online learning platforms that children can access at home as well as at school via a school or individual password. Sometimes teachers set activities on these websites for homework but we hope that children can enjoy accessing them at any time. Further details about access for these will be given to you when your child starts school. Please let us know if your child does not have access to a computer/tablet or internet at home so that we can try to provide a little more access at school for him/her.

## **Extra Curricular Activities (Clubs)**

These after school activities, delivered by the school staff or by a private provider, are a valuable extension of the curriculum. Children are encouraged to take part in these extra opportunities for learning and have the opportunity to attend many and varied clubs over the year. These activities may include sports, choir, dance, music, homework, art and ICT. Children also sometimes have the chance to play in sports tournaments against other local school after school.

We try to ensure that as many children as possible can access these activities and many clubs are free of charge. We do sometimes ask for a small charge for after school clubs.



## **Special Educational Needs**

The term Special Educational Needs (SEN) has a legal definition which is set out in the Education Act 1996 and the Children and families Act 2014. It applies to children who have learning difficulties or disabilities that make it significantly harder for them to learn or access education than most other children of their age.

Some children find it harder to learn than other children of the same age. We support these children by making small changes to teaching methods and resources in order to help children to learn and boost their progress.

Children and young people who have SEN tend to have more significant barriers to their learning. They do not necessarily have a disability and many disabled children and young people do not have special educational needs.

When a child has SEN, we put specific support in place, working closely with parents and if necessary, drawing on the expertise of other agencies such as the speech and language service, educational psychologist or behaviour support service.

The school has a qualified SENCO (Special Educational Needs Coordinator) and governor with designated interest in SEN. Further details about our SEN offer can be found on our school website (About Us – Policies – SEN Information Report).

## **Educational Benefits**

Pupils of parents who are in receipt of certain benefits may be eligible to certain educational benefits. These are triggered by your child's entitlement to 'Free School Meals'. Every pupil eligible for 'Free School Meals' also triggers essential funding for the school called 'Pupil Premium Funding'.

Some of the benefits are offered by the council (free lunches, cycle training, free or reduced cost music lessons) but some are offered by the individual school, as determined by each school's governing body. At St Barnabas, the governing body have decided to offer free or subsidised clubs and visits and a school uniform grant for each new pupil deemed eligible for free school meals.

Although children in Years Reception to end of Year 2 are automatically entitled to free school lunches, your child will still benefit from other free or subsidised school activities if eligible for this funding. We therefore ask all parents of new starters to complete the Educational Benefits Form and return it to school.

# **Partnerships**

## **Church School Links**



St. Barnabas C.E. Primary School is a Voluntary Controlled school founded in the late 1800's by the Church of England. It is now under the control of City of York Local Authority (the L.A.) but it is linked to St. Barnabas Church in the York Diocese and Christian principles form the basis of the school's character.

The local clergy and members of the parish visit school on a regular basis and are actively involved in our work. The children visit the church as both part of their RE curriculum and to attend services. Parents are invited to join us for church services

## **Home-School Links**

As a small school, we make great efforts to get to know parents and involve them with the life of the school.

We would much prefer you to come to school and talk about your concerns, than let a difficulty worsen. We would also like some feedback on things you have enjoyed!

All parents are invited to parents' evenings in the autumn and spring term to discuss the progress being made by their child. There is also a full written report sent home at the end of the summer term.

There are frequent opportunities for parents to find out more about school life and what/how your child is learning. As well as 'Exit Tasks' at the end of class topics, we hold half termly 'Stay and Learn' sessions where you can spend 20-30 minutes in your child's class lesson. These are usually held at the beginning or end of the school day.

There is an active Parent Teachers Association which any parent can join or support, its work provides much-needed extra funds for school. Please ask for details at the school office.

## **Leeman Road Playgroup**

This pre-school provision is run independently but shares our Foundation Stage Unit. The staff from the Playgroup and school work closely together to ensure a smooth transition into school.

Attending the Playgroup does not mean that your child is guaranteed a place at St Barnabas School. Applications for a school place must be made to the Local Authority between December and February of the year in which your child will start school.

Please contact the Leeman Road Playgroup directly (tel: 01904 650903) to enquire about places.

## **St. Barnabas Out of School Club**

This club is run by York Childcare and it offers before and after school care for children at St. Barnabas School and the Leeman Road Playgroup. The club takes place in the dining area at the back of the hall. Breakfast Club runs every morning from 7:45am and After School Club runs from 3.00 - 6.00pm.

Bookings needs to be made through the club itself (Tel: 0776 6191405). If there is enough demand, the Out of School Club also runs a Holiday Club during the school holidays.

## **Transfer to Secondary Education**

In your child's final year at St. Barnabas, information is provided by the local secondary schools to help you to make a decision on which one to choose.

There are several secondary schools close by to choose from. Millthorpe Secondary School is the catchment secondary school for children who live in our catchment area. However, parents are free to choose any secondary school in York and on leaving St Barnabas, children typically move to one of 4 nearby secondary schools.

We strongly advise that you visit the schools and read their admissions policies before making a decision and that both you and your child are involved in making the choice, following your visits.

## **Regulatory Documents**

There is a large selection of regulatory documents in school, many of which are also on our school website.

If you are unable to find the information that you need from the website, please ask at the school office.

## **Concerns and Complaints**

If you have a concern, we ask that you speak to us about it as soon as possible. We hope that most concerns can be resolved quickly without the need for further action. In the event of a complaint arising about the school, the complainant should, first of all, approach the Headteacher. If the Headteacher is unable to resolve the matter satisfactorily, it should be referred to the Governing Body. A copy of the Complaints Procedure is available on our website and on request from the office.

## **Finally..**

The staff and governors are committed to the education and well-being of your child. We hope that you will be an active partner in helping your child to achieve their full potential and enjoy sharing in their learning and growing.

We hope that you have found all the information that you need in this prospectus. If you would like further information or to visit the school, please get in touch.